

VIEW C
SCALE: 2/1

ESTIMATED CENTER OF GRAVITY*

MODELS	DIMENSION X (INCHES)	DIMENSION Y (INCHES)	DIMENSION Z (INCHES)
5000 SERIES	14.62	0.00	1.00
6000 SERIES	15.27	1.60	1.00

*ASSUMES REMOTE INPUT PROVISION, NO PARK BRAKE, NO RETARDER

SEE DRAWING A558-040 FOR CIRCUIT REQUIREMENTS

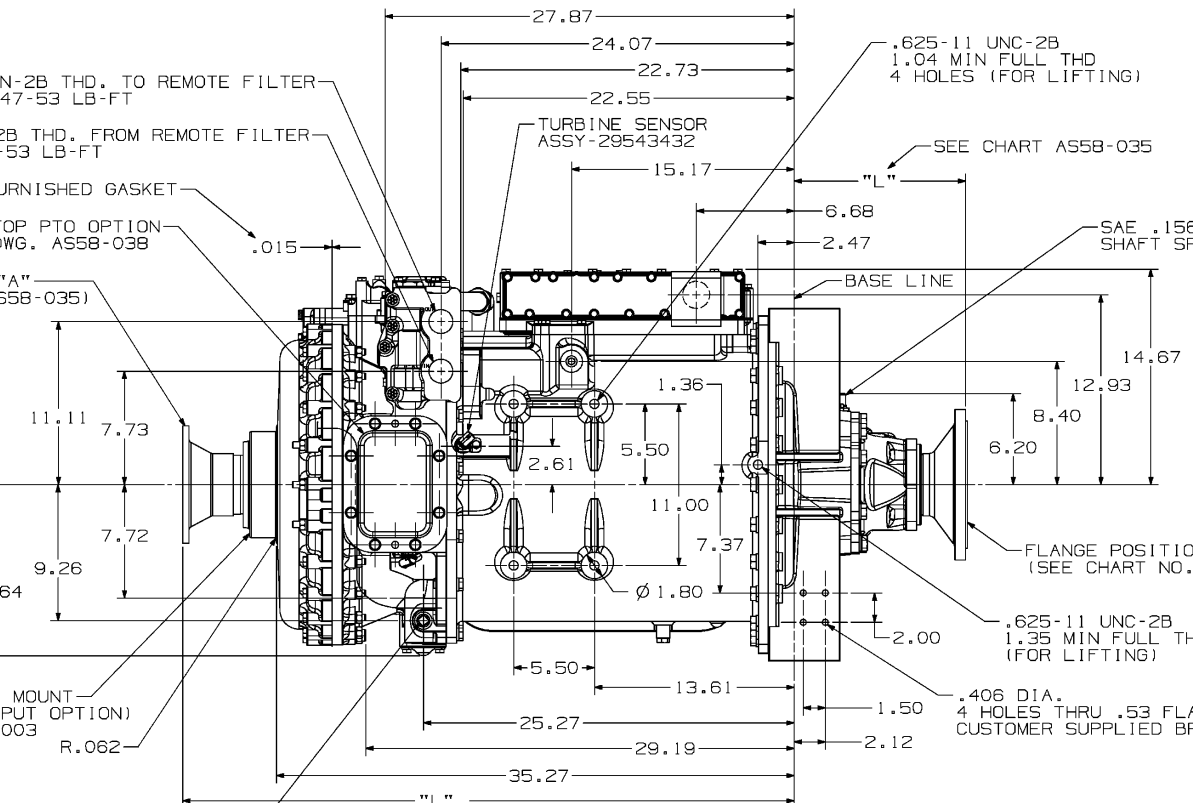
1.625-12 UN-2B THD. TO REMOTE FILTER TORQUE TO 47-53 LB-FT
1.625-12 UN-2B THD. FROM REMOTE FILTER TORQUE TO 47-53 LB-FT

CUSTOMER FURNISHED GASKET

FOR TOP PTO OPTION SEE DWG. A558-038

FLANGE POSITION "A" (SEE CHART NO. A558-035)

FRONT TRUNNION MOUNT (FOR REMOTE INPUT OPTION) SEE DWG. A500-003

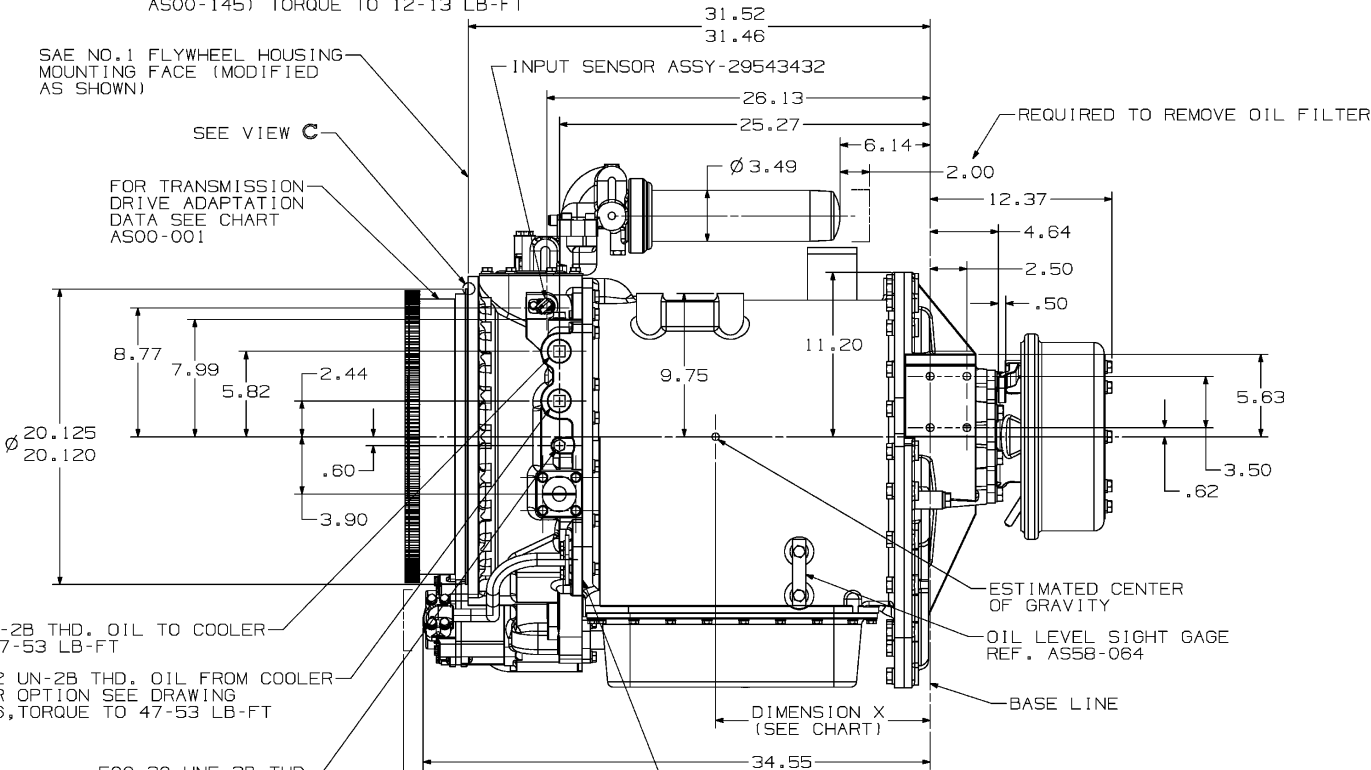


.750-16 UNF-2B THD. OIL TEMPERATURE CONNECTION USE 2.00 X .437 DIA. BULB SENDING UNIT TO DEPTH SHOWN (SEE DWG. A500-145) TORQUE TO 12-13 LB-FT

SAE NO.1 FLYWHEEL HOUSING MOUNTING FACE (MODIFIED AS SHOWN)

SEE VIEW C

FOR TRANSMISSION DRIVE ADAPTATION DATA SEE CHART AS00-001



1.625-12 UN-2B THD. OIL TO COOLER TORQUE TO 47-53 LB-FT

1.625-12 UN-2B THD. OIL FROM COOLER RETARDER OPTION SEE DRAWING A558-036, TORQUE TO 47-53 LB-FT

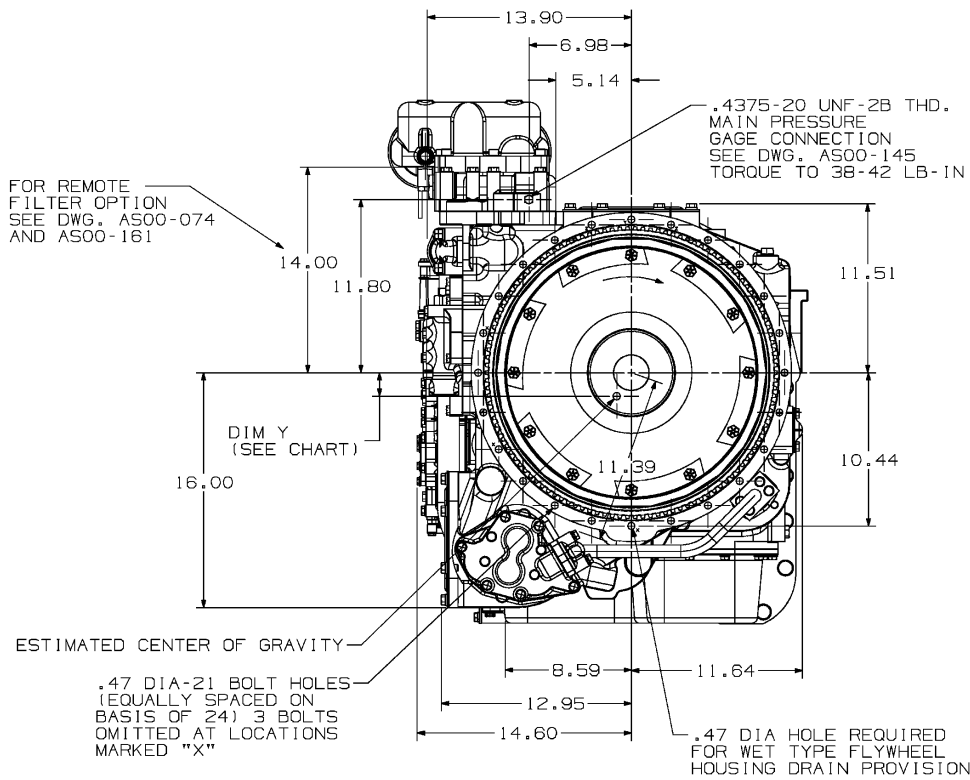
.500-20 UNF-2B THD. TRANSMISSION LUBE PRESSURE TAP TORQUE TO 58-63 LB-FT

SEE DRAWING A558-040 FOR CIRCUIT REQUIREMENTS

INCREASE TRANSMISSION LENGTH 3.44 WITH TORQUEMATIC RETARDER OPTION. SEE RETARDER OPTION DRAWING A558-036.

REQUIRED TO REMOVE INPUT OIL PUMP

FOR REMOTE FILTER OPTION SEE DWG. A500-074 AND A500-161



ESTIMATED CENTER OF GRAVITY

.47 DIA-21 BOLT HOLES (EQUALLY SPACED ON BASIS OF 24) 3 BOLTS OMITTED AT LOCATIONS MARKED "X"

.47 DIA HOLE REQUIRED FOR WET TYPE FLYWHEEL HOUSING DRAIN PROVISION

FOR BASIC TRANSMISSION SPECIFICATIONS, SEE SECTION "M" IN OFF-HIGHWAY TECH DATA
DIRECTIONS OF ROTATION ARE SHOWN FOR CLOCKWISE INPUT ROTATION AT FLANGE POSITION A AND FORWARD GEAR.

ALL TRANSMISSION CONTROL SYSTEM DESIGNS SHOULD BE REVIEWED BY ALLISON TRANSMISSION DIVISION OF GENERAL MOTORS CORPORATION ENGINEERING DEPARTMENT.



FR2



INCH
THIRD ANGLE

- AF (1) TURBINE SENSOR ASSY-29543432 WAS TURBINE SENSOR ASSY-29509637
- (2) INPUT SENSOR ASSY-29543432 WAS INPUT SENSOR ASSY-29509637
- (3) SEE SHEET 2

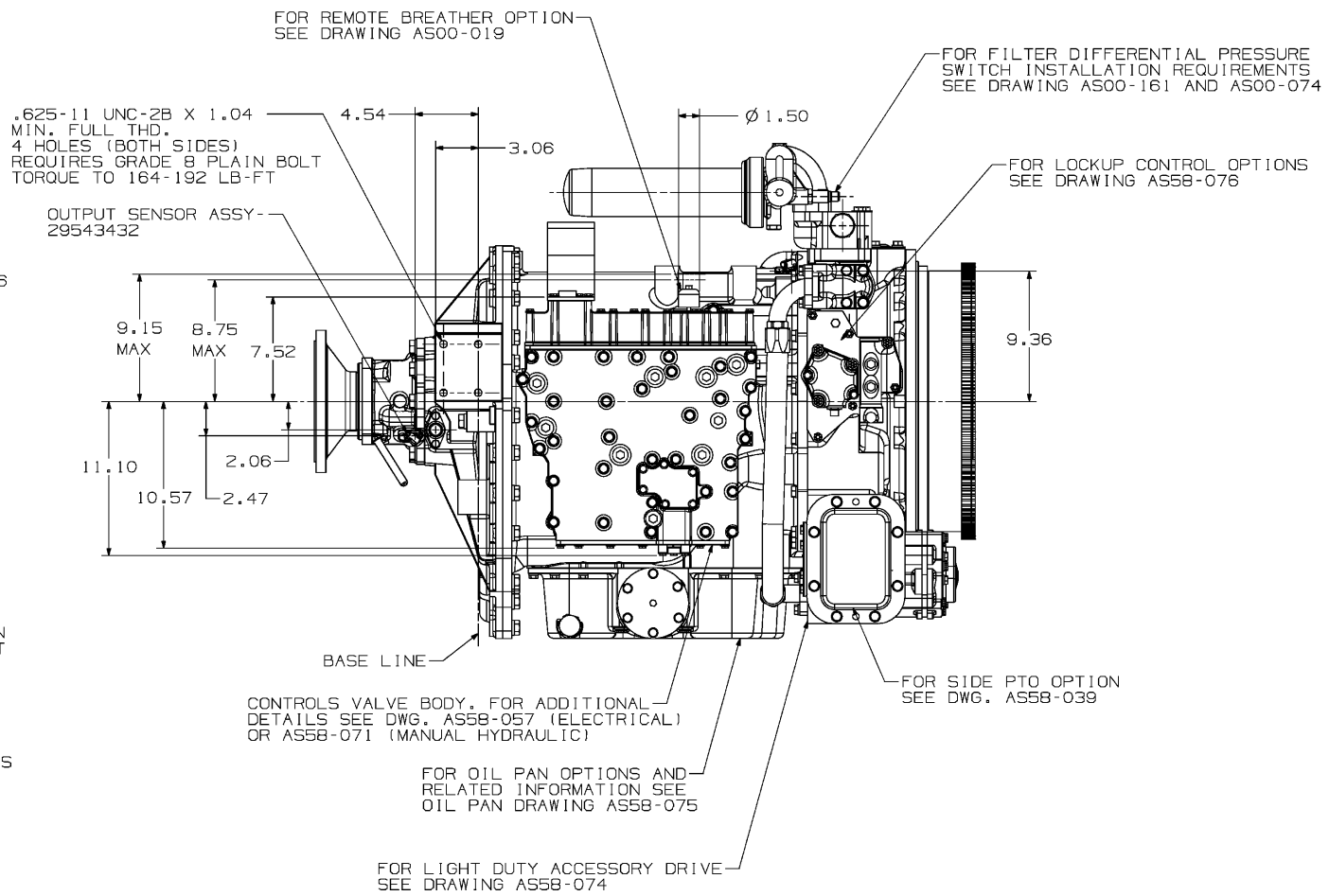
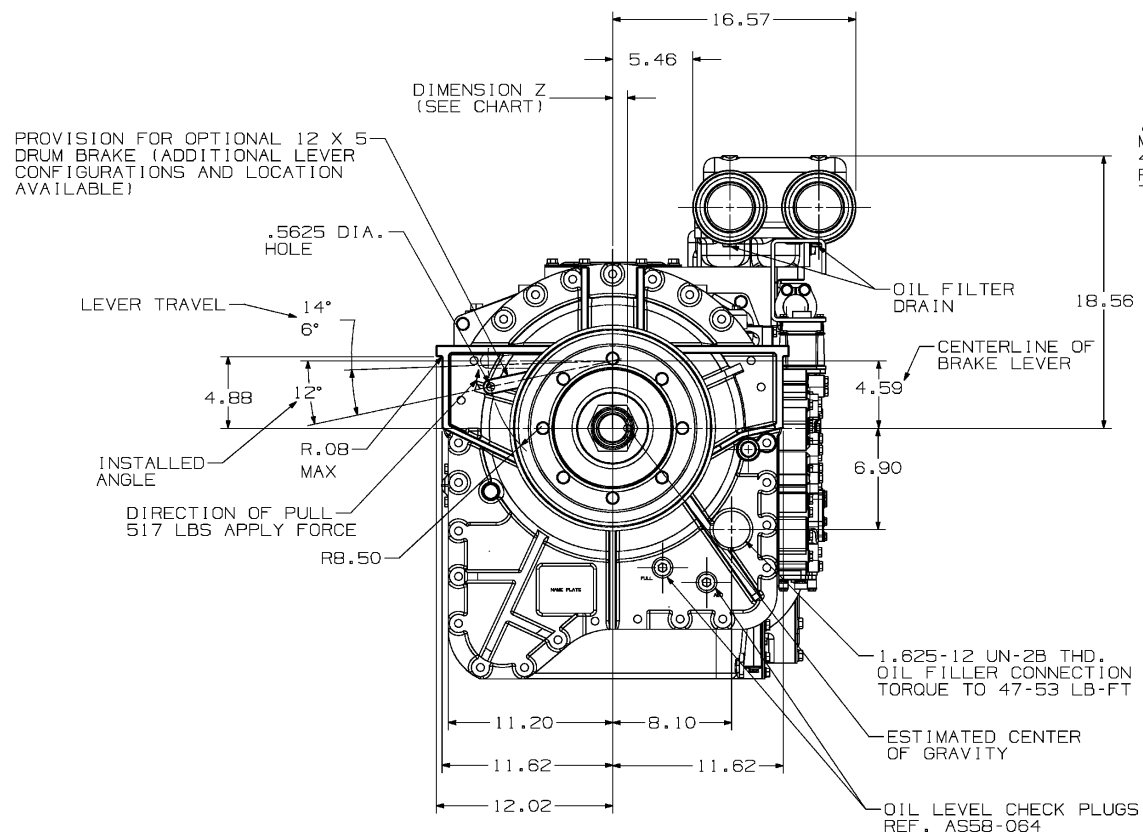
REV (1) REVISED AND REDRAWN

REV	DESCRIPTION	DATE	CHK	INT
07	DE08	01/11	15	AU00
08	01/11	15	AU00	01/11

MODEL 5000/6000 SERIES
SIZE/ CAGE CODE/ DWG NO
R 73342 AS58-029

FR1 DWG. NO. AS58-029 LTR SH AF I

SCALE 1/4 SHEET 1 OF 2 UNIGRAPHICS



AF (3) OUTPUT SENSOR ASSY-29543432 WAS OUTPUT SENSOR ASSY-29509637	07DEC08 CLK/ML
AE (1) SEE SHEET 1	15AUG00 LJT/DN
REV	DATE
REVISIONS	
DRAWN HUGHES	DATE 6-8-81
CHECKED SWEANY	DATE 6-18-81
APPROVED RTS	DATE 6-19-81
PROJ. ENGR. WELCHER	DATE 6-18-81
APPL. ENGR. BONHAM	DATE 6-16-81
BASIC INSTALLATION-STRAIGHT THRU OUTPUT	
MODEL 5000/6000 SERIES	
SIZE/CAGE CODE/DWG NO	R 73342 AS58-029
SCALE 1/4	SHEET 2

FR1 DWG. NO. AS58-029 LTR SH AF 2

UG

FR2

INCH

THIRD ANGLE

THE INFORMATION CONTAINED HEREIN IS PROPRIETARY AND THE PROPERTY OF ALLISON TRANSMISSION, GENERAL MOTORS CORPORATION AND MAY NOT BE REPRODUCED, DISCLOSED OR USED FOR ANY PURPOSE OTHER THAN A QUOTATION TO OR AN ORDER FROM ALLISON TRANSMISSION WITHOUT THE SPECIFIC WRITTEN AUTHORIZATION OF ALLISON TRANSMISSION.

DWG AS58-029